

# QWIK CAPS



## TECHNICAL DATA

### DESCRIPTION:

- Fast, easy installation
- Suitable for above or below ground use as a permanent solution to cap pipe ends, test pipe and cleanouts
- Low cost and reusable
- Fits 4" plastic, cast iron, copper, steel

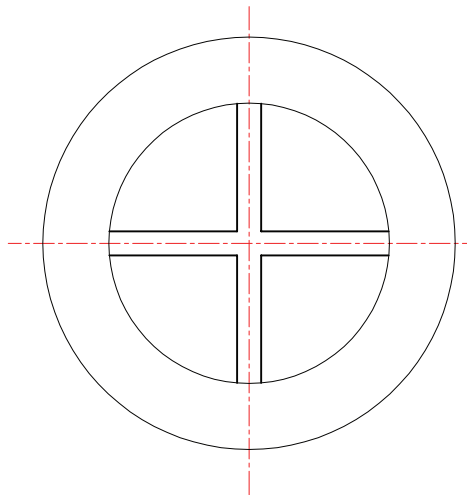
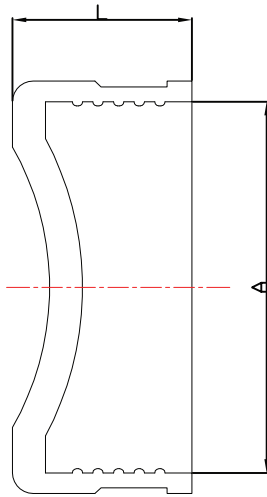
PART#  
QC-4

DESCRIPTION  
4" QWIK CAP

Country of origin: China

## ROUGH IN DRAWING

Model No.	Description	A	L
QC-112	1 1/2 RUBBER TEST CAP	48	37
QC-2	2 RUBBER TEST CAP	60	37
QC-3	3 RUBBER TEST CAP	88	38
QC-4	4 RUBBER TEST CAP	114	38
QC-6	6 RUBBER TEST CAP	170	56
QC-8	8 RUBBER TEST CAP	220	74



ALL DIMENSIONS SHOWN ARE NOMINAL